

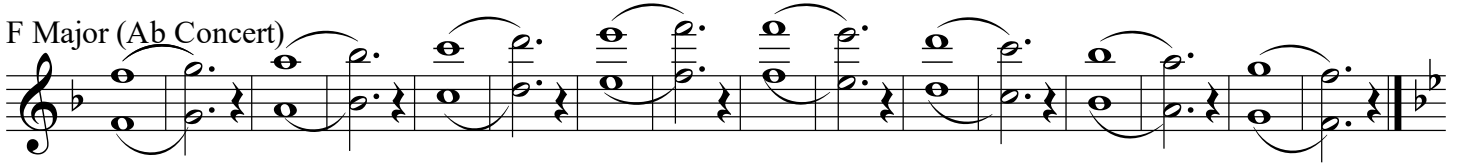
Score

# Scales Alto Sax

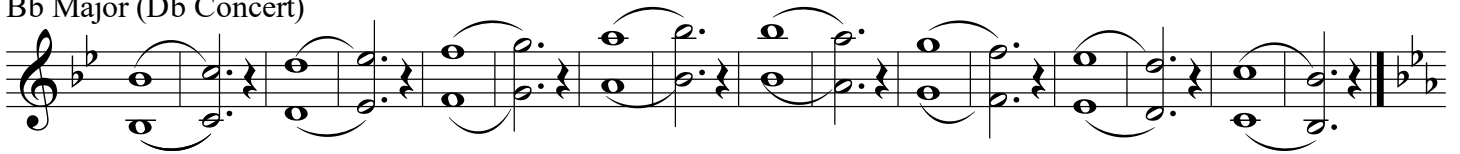
C Major (Eb Concert)



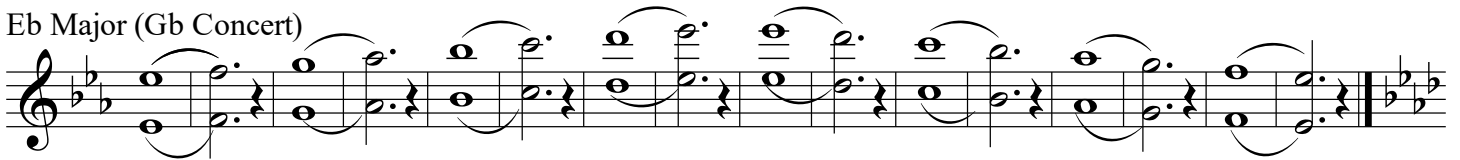
F Major (Ab Concert)



Bb Major (Db Concert)



Eb Major (Gb Concert)



Ab Major (Cb or B Concert)



Db Major (Fb or E Concert)



Gb Major (A Concert)



G Major (Bb Concert)



D Major (F Concert)

Musical notation for D Major (F Concert) in treble clef. The key signature has two sharps (F# and C#). The melody consists of a sequence of eighth notes: D4, E4, F#4, G4, A4, B4, C#5, D5, C#5, B4, A4, G4, F#4, E4, D4. The notes are grouped in pairs with slurs and stems pointing down.

A Major (C Concert)

Musical notation for A Major (C Concert) in treble clef. The key signature has three sharps (F#, C#, G#). The melody consists of a sequence of eighth notes: A4, B4, C#5, D5, E5, F#5, G#5, A5, G#5, F#5, E5, D5, C#5, B4, A4. The notes are grouped in pairs with slurs and stems pointing down.

E Major (G Concert)

Musical notation for E Major (G Concert) in treble clef. The key signature has four sharps (F#, C#, G#, D#). The melody consists of a sequence of eighth notes: E4, F#4, G#4, A4, B4, C#5, D#5, E5, D#5, C#5, B4, A4, G#4, F#4, E4. The notes are grouped in pairs with slurs and stems pointing down.

B Major (D Concert)

Musical notation for B Major (D Concert) in treble clef. The key signature has five sharps (F#, C#, G#, D#, A#). The melody consists of a sequence of eighth notes: B4, C#5, D#5, E5, F#5, G#5, A#5, B5, A#5, G#5, F#5, E5, D#5, C#5, B4. The notes are grouped in pairs with slurs and stems pointing down.

F# Major (A Concert)

Musical notation for F# Major (A Concert) in treble clef. The key signature has six sharps (F#, C#, G#, D#, A#, E#). The melody consists of a sequence of eighth notes: F#4, G#4, A4, B4, C#5, D#5, E#5, F#5, E#5, D#5, C#5, B4, A4, G#4, F#4. The notes are grouped in pairs with slurs and stems pointing down.